

ADCATHERM - PAT Series Plate heat exchangers

DESCRIPTION

The ADCATHERM PAT – plate heat exchangers (gasketed and bolted), consists of varying number of pressed plates, clamped together between a fixed plate and a movable plate, all assembled in a metal frame.

MAIN FEATURES

Corrosion-resistant stainless steel plates
 Highly efficient heat transfer (K-values much higher comparing with shell and tube design)
 Less area required for installation
 Low liquid content
 Additional capacity available by fitting extra transfer plates

OPTIONS : Special designs and materials (titanium, etc).
 Brazed construction
 Thermal insulation.
 Stainless steel frame

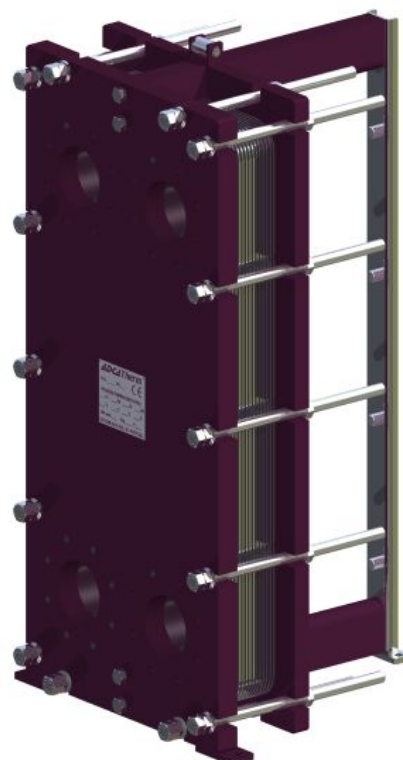
USE : Steam, water, hot condensate and other fluids compatible with the construction.

AVAILABLE MODELS: PAT – Bolted plate heat exchanger

CONNECTIONS : Threaded BS21
 Flanged according to EN 1092-1 and ANSI B16.5 150#

INSTALLATION: Vertical installation or horizontal on request

ORDER REQUIREMENTS: Hot fluid pressure and temperature
 Inlet and outlet cold fluid temperature
 Mass flow or heat duty.
 See inquiry sheet.



LIMITING CONDITIONS **					
Rating	Sealing Material	Temp. °C	Rating	Sealing Material	Temp. °C
PN6	NBR	150	PN25	NBR	150
PN10	EPDM	160		EPDM	150
PN16	VITON - S	195*		VITON - S	150

*With special frame design.

Min. Oper. temp.: -20°C. Design code: AD-2000 Merkblatt HP0

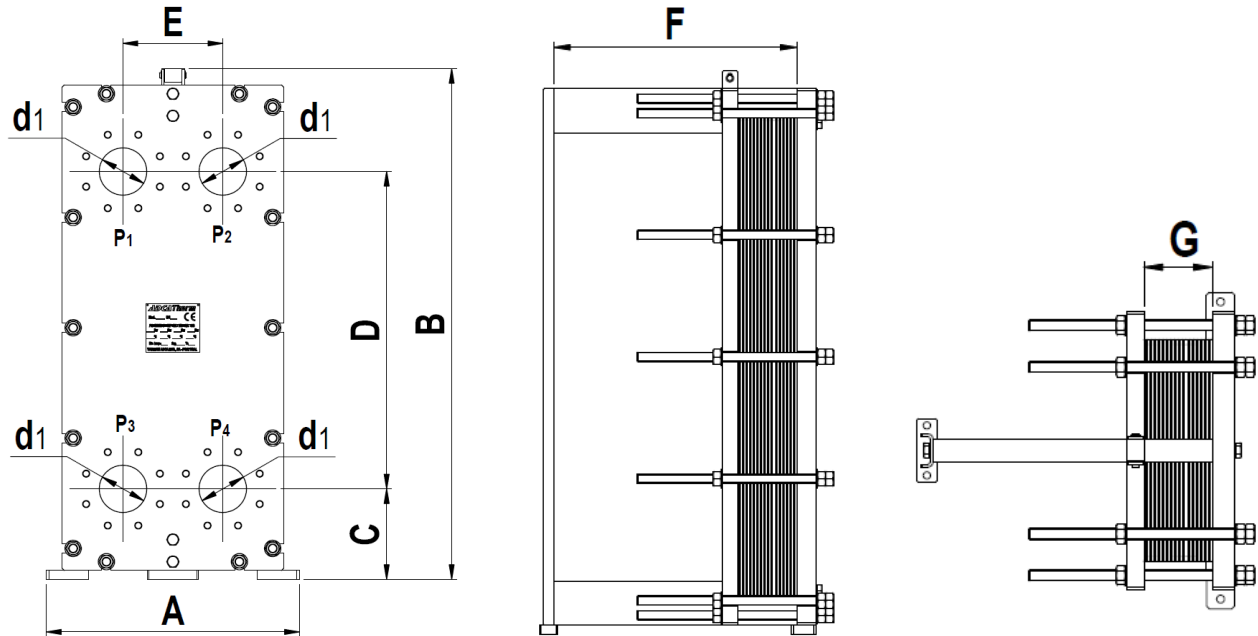
** Rating according to EN1092:2007.

MATERIALS	
DESIGNATION	MATERIAL
Plates	AISI316L / 1.4404; AISI304 / 1.4301; Titanium ASTM 265 B Grade 1
Frame	P250GH / 1.0460; AISI304 / 1.4301; AISI316 / 1.4401
Gaskets and RubberLiner	NBR; EPDM; VITON - S
Flanges	P250GH / 1.0460; AISI316 / 1.4401
Tightening bolts	AISI304 / 1.4301; AISI316 / 1.4401

EN 10204 3.1 certificate available if requested with the order.

CE Marking :

This product has been designed for use on water and steam which are in Group 2 of the PED-European Pressure Equipment Directive 97/23/EC and it comply with those requirements. The product carries the CE mark when applicable. The CE marking will vary from Cat. I up to Cat. IV, depending on the PAT model, number of plates and pressure rating. On the smaller sizes it will be SEP, it will not carry the CE marking.


DIMENSIONS

Model	PN (bar)	A	B	C	D	E	F*	G**	d1	W (m ²)	W1 (m ²)
PAT 05	10 to 16	185	470	45	381	70	250 - 1000	K x 2,7	1"	6	0,04
PAT 09	10 to 16	185	765	45	676	70	250 - 1000	K x 2,7	1"	12	0,08
PAT 10	10 to 25	310	733	128	494	126	250 - 1000	K x 2,9	2"	20	0,1
PAT 16	10 to 25	310	933	128	694	126	250 - 1000	K x 2,9	2"	30	0,16
PAT 22	10 to 25	310	1182	128	894	126	250 - 1000	K x 2,9	2"	45	0,21
PAT 31	10 to 25	480	1332	204	894	225	500 - 3000	K x 3,1	100	150	0,3
PAT 40	10 to 25	480	1579	204	1141	225	500 - 3000	K x 3,1	100	200	0,4
PAT 41	10 to 25	620	1470	225	941	290	500 - 4000	K x 3,5	150	280	0,4
PAT 42	10 to 25	620	1470	225	941	290	500 - 4000	K x 3,1	150	315	0,4
PAT 50	10 to 25	480	1826	204	1388	225	500 - 3000	K x 3,1	100	250	0,5
PAT 60	10 to 25	620	1835	225	1306	290	500 - 4000	K x 3,5	150	420	0,6
PAT 62	10 to 25	620	1835	225	1306	290	500 - 4000	K x 3,1	150	450	0,6
PAT 70	10 to 25	760	1740	285	1130	395	500 - 4000	K x 3,1	200	355	0,7
PAT 71	10 to 25	480	2320	204	1882	225	500 - 3000	K x 3,1	100	350	0,7
PAT 80	10 to 25	620	2200	225	1671	290	500 - 4000	K x 3,5	150	560	0,8
PAT 81	6 to 25	980	1930	365	1100	480	1780 - 5280	K x 3,7	300	640	0,8
PAT 82	10 to 25	620	2200	225	1671	290	500 - 4000	K x 3,1	150	600	0,8
PAT 100	10 to 25	760	2100	285	1490	395	500 - 4000	K x 3,1	200	700	1
PAT 112	10 to 25	620	2687	225	2157	290	500 - 4000	K x 3,1	150	840	1,15
PAT 120	6 to 25	980	2320	365	1490	480	1780 - 5280	K x 3,7	300	960	1,2
PAT 130	10 to 25	760	2460	285	1850	395	500 - 4000	K x 3,1	200	910	1,3
PAT 150	6 to 16	1370	2500	480	1466	672	1980 - 5980	K x 4,0	500	1600	1,5
PAT 160	6 to 25	980	2710	365	1879	480	1780 - 5280	K x 3,7	300	1280	1,6
PAT 190	6 to 25	980	3100	365	2267	480	1780 - 5280	K x 3,7	300	1520	1,9
PAT 200	6 to 16	1370	2855	480	1822	672	1980 - 5980	K x 4,0	500	1600	2
PAT 205	10 to 25	480	1160	204	719	225	500 - 2500	K x 3,1	100	105	0,21
PAT 250	6 to 16	1370	3211	480	2178	672	1980 - 5980	K x 4,0	500	2000	2,5
PAT 300	6 to 16	1370	3567	480	2534	672	1980 - 5980	K x 4,0	500	2400	3
PAT 405	10 to 25	760	1380	285	770	395	500 - 4000	K x 3,1	200	300	0,41

*Minimum and maximum possible measures; **Distance between frames: K=number of plates; W – Maximum total surface area (m²).

W1 – Surface area per plate (m²); d1 to d4 connections sized according with the flow conditions.

Consult factory for certified dimensions and weight. Other sizes and designs can be supplied under request.

The pipe connections are sized considering the correct thermal insulation possibility. The insulation it's not included but it is recommended to be done after the installation.