

STEAM INJECTORS SI115

DESCRIPTION

The SI series steam injectors from ADCA are injection condensers. They ensure low noise and vibration and rapid heating of still or flowing fluids in basins and vessels due to direct steam injection.

Steam enters through the inlet housing, passes along the centre of the heater, mixing with the cool water which drawn in through radial holes.

Connections are female screwed.



MAIN FEATURES

Quiet operation.
Corrosion-resistant.
No moving parts.

OPTIONS: Complete system including vacuum breaker and self operated controller. Different capacities and design available under request.

USE: Direct steam injection heating systems. See IMI installation and maintenance instructions.

AVAILABLE MODELS: SI115.

SIZES: 1/2".

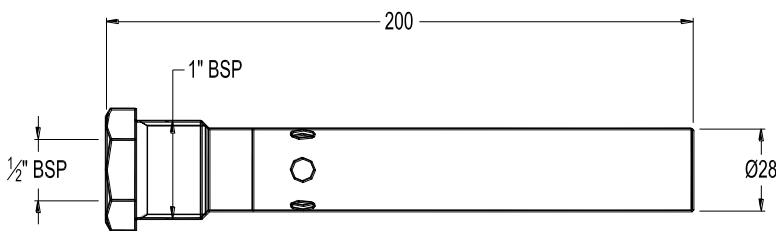
CONNECTIONS: Female screwed ISO 7/1 Rp (BS21).

INSTALLATION: Horizontal installation.

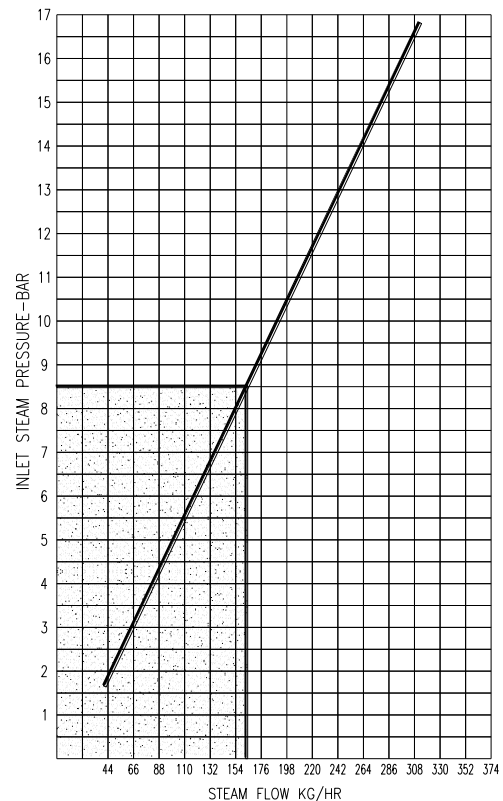
LIMITING CONDITIONS: Body design conditions : PN 25
Max. operating pressure : 17 bar
Max. recommended water temp.: 95 °C

MATERIALS: Austenitic stainless steel throughout
AISI316 / 1.4401.

How to order: i.e. SI115 DN 1/2" BSP.



CAPACITY CHART
(With the vessel at atmospheric pressure)



Selection under shadow area is recommended for quietist operation.

Example: We require the injection of 230 kg/h of steam with a pressure of 5,5 bar. From the injector capacity chart, we see that at 5,5 bar the injector will pass 110 kg/h and 230 divided by 110 = 2,09.

Two injectors will barely cope, so we recommend installing three injectors, which will meet the demand.